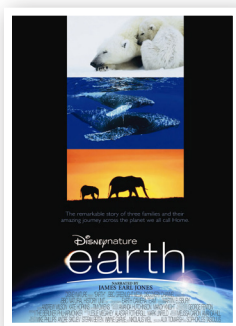




EARTH



Synopsis

Earth tells the remarkable story of three animal families and their amazing journeys across the planet we all call home. *Earth* combines rare action, unimaginable scale and impossible locations by capturing the most intimate moments of our planet's wildest and most elusive creatures.

Discussion Questions

- After viewing *Earth*, did you learn something new about our planet? What makes our Earth so special to you?
- What was the most fascinating creature in the film? What made this creature so interesting to you?
- While some scenes in the film might have been difficult to watch, they demonstrated the circle of life and how all animals in our ecosystem work together to make our planet and the creatures on it thrive. After watching *Earth*, did your appreciation of the ways in which all creatures are connected change? In what way?
- Think about the journey that water takes in the film. How does water connect all the creatures and environments on Earth?

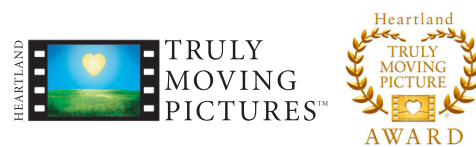
Activities

- Use the most interesting animal highlighted in *Earth* as inspiration, and then research and explore its environment, habits and characteristics. Find photos of the animal and its environment, and record facts about both. Share this knowledge with others and explain why it is so interesting.



Movie images © 2007 Walt Disney

Find out what other people are saying about this film and discover how they are using the guide!
Join the conversation at TrulyMovingPictures.org.





EARTH

- Water connects everything. While understanding the flow of all Earth’s water might be a difficult concept to understand, start small and learn how clouds and rain form. Using the science of heating and cooling water, make rain in your home with the help of an adult. Go to www.ehow.com/how_5848839_make-rain-science-class.html for details.
- Go to the zoo with your family and take the time to visit all the kinds of animals highlighted in *Earth* so your family can experience these wondrous creatures up close.

Get Involved

Earth records the impact that changing temperatures are having on animals all over the planet. As humans, our technologies and lifestyles greatly impact the lives of these animals. We have a tremendous responsibility to reduce our impact on the environment as much as possible and look out for the well-being of all animals.

- At a local level you can volunteer at an animal care facility or a zoo in your community. Find ways to get involved through your local Humane Society, SPCA or other shelter. Learn more:
 - www.HumaneSociety.org
 - www.ASPCA.org
- Make sure that animals across the planet are looked out for by getting involved with the World Wildlife Fund. You can find more at www.WorldWildlife.org.



Movie images © 2007 Walt Disney

Find out what other people are saying about this film and discover how they are using the guide!
Join the conversation at TrulyMovingPictures.org.

