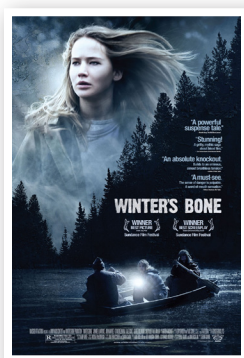




Winter's Bone



Synopsis

Seventeen-year-old Ree Dolly sets out to track down her father, who put their house up for his bail bond and then disappeared. If she fails, Ree and her family will be turned out into the Ozark woods. Challenging her outlaw kin's code of silence and risking her life, Ree hacks through the lies, evasions and threats offered up by her relatives and begins to piece together the truth.

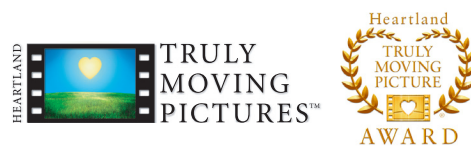
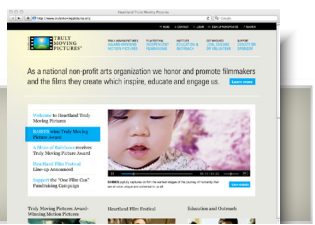
Discussion Questions

- Ree has a dream to join the military. Why do you think she was so eager to join the U.S. Army?
- The land that Ree's house sits on was rich with lumber, but Ree was very resistant to selling the property to make money on the trees. What would you have done in that situation? Why was Ree so unwilling to sell?
- Ree became a parental figure in the lives of her two younger siblings after her father went missing and her mother became ill. What types of things did she do to fulfill this role for the children? Would the children have been better off if they had gone to live with their aunt and uncle? What about Ree?
- The relationship between Ree and her uncle Teardrop changed dramatically over the course of the film. How did it start and how did it end?
- Teardrop's fate was open ended and open for interpretation. What do you think happened to Teardrop and why?



Movie images © 2010 Roadside Attractions

Find out what other people are saying about this film and discover how they are using the guide! Join the conversation at TrulyMovingPictures.org.





Winter's Bone

- Why was Ree forced to boat out to her father's body and remove the proof of his death herself? What was the purpose of that trip? How do you feel that affected her?
- Through most of her search, the entire extended family worked against Ree, despite the fact that she would soon be homeless. Why? Imagine your family in that situation. How would it be different or similar?

Do Your Research

- How prevalent is the use of methamphetamine in your community?
- What has been done locally, state-wide and federally to try and curb the use, production and sale of methamphetamines? Do you think any of these efforts have succeeded? Which ones? How and why?
- Visit these online resources to learn about where meth has made an impact and what has been done about it: www.pbs.org/wgbh/pages/frontline/meth/map. Why do you think some areas are more affected than others?
- What is the physical impact of using methamphetamines? What does it do to the brain and the rest of the body as a result?

Get Involved:

- There are many victims of drug abuse and sales who have nothing to do with the crime itself. The children of those who are involved are often the most negatively affected. Volunteer at a local children's shelter in your community to make a positive impact on children who are often victims of their parents' crimes.
- Invite your local police department to give an educational overview of methamphetamine in your community to your local neighborhood group or school. The police can give information on what the drug can do to you physically. They will also give information on what to look out for to identify a potential meth user or "meth lab."

Movie images © 2010 Roadside Attractions

Find out what other people are saying about this film and discover how they are using the guide!
Join the conversation at TrulyMovingPictures.org.

